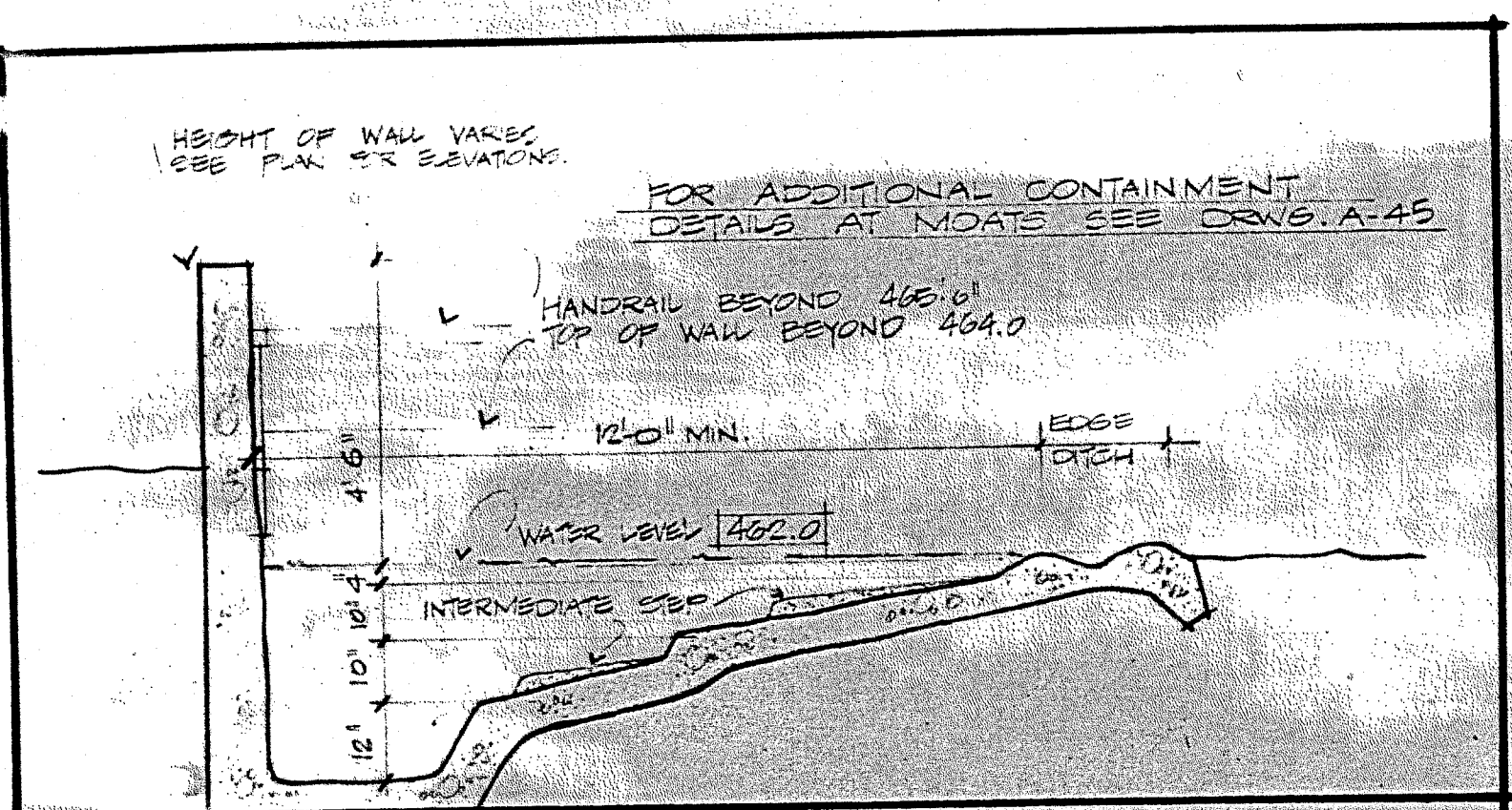
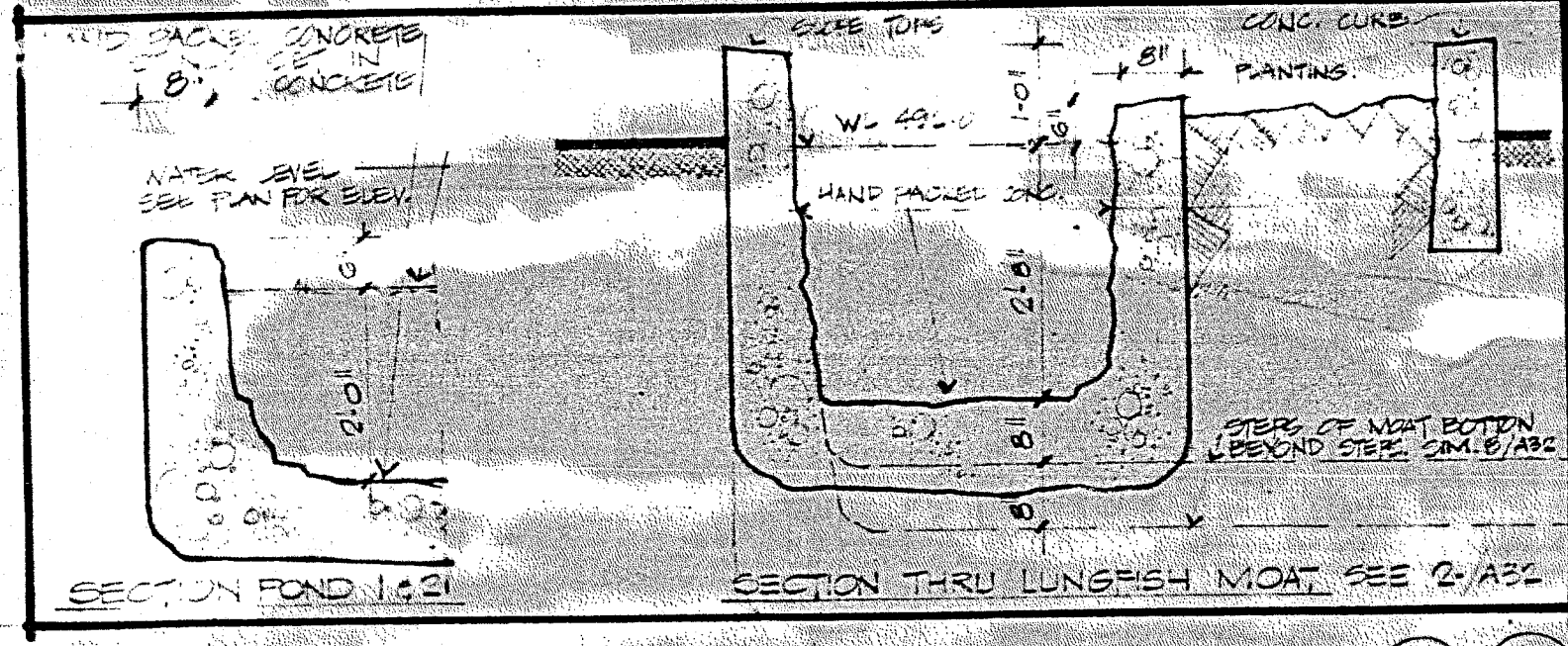


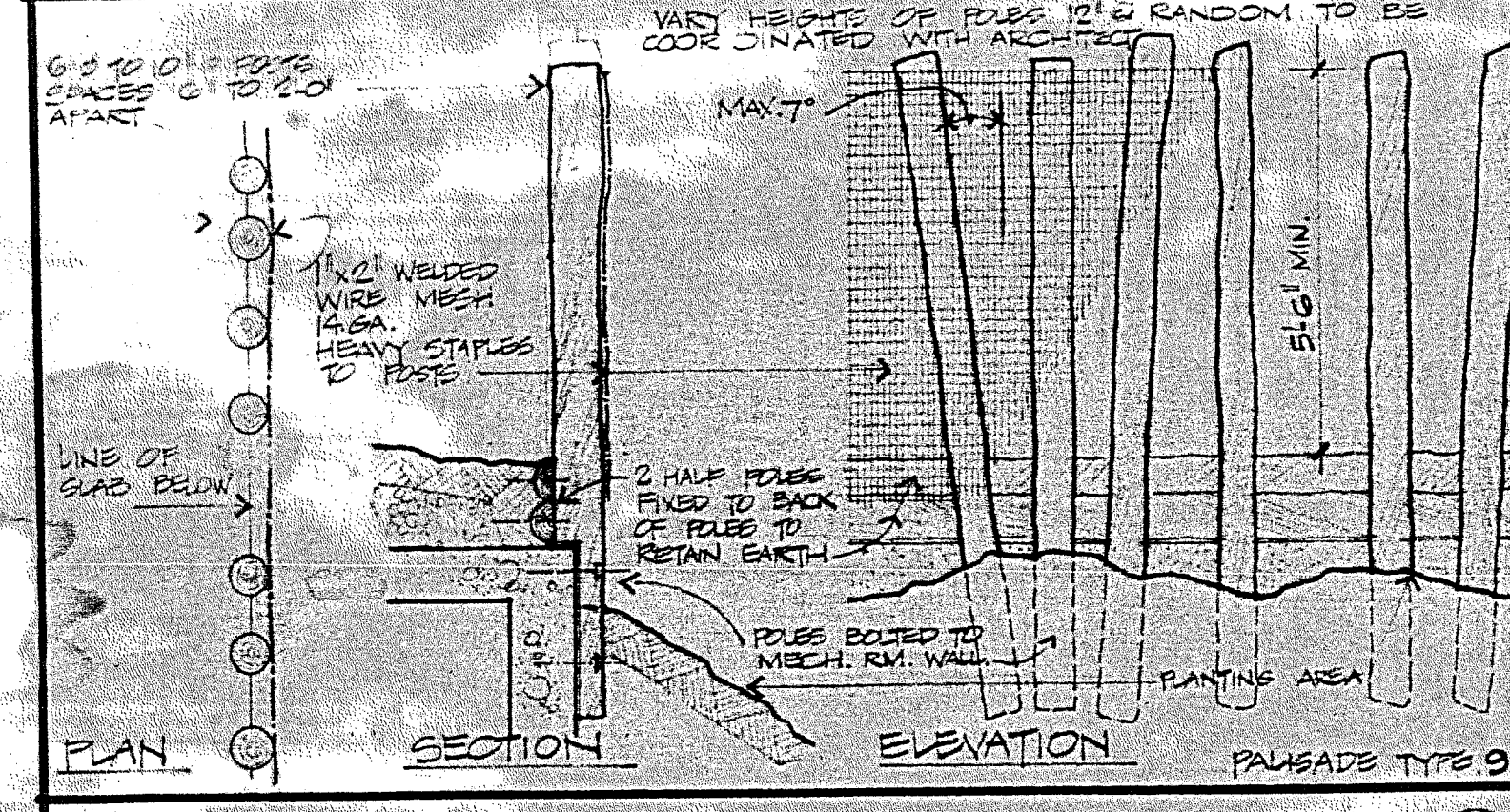
date	no	chk



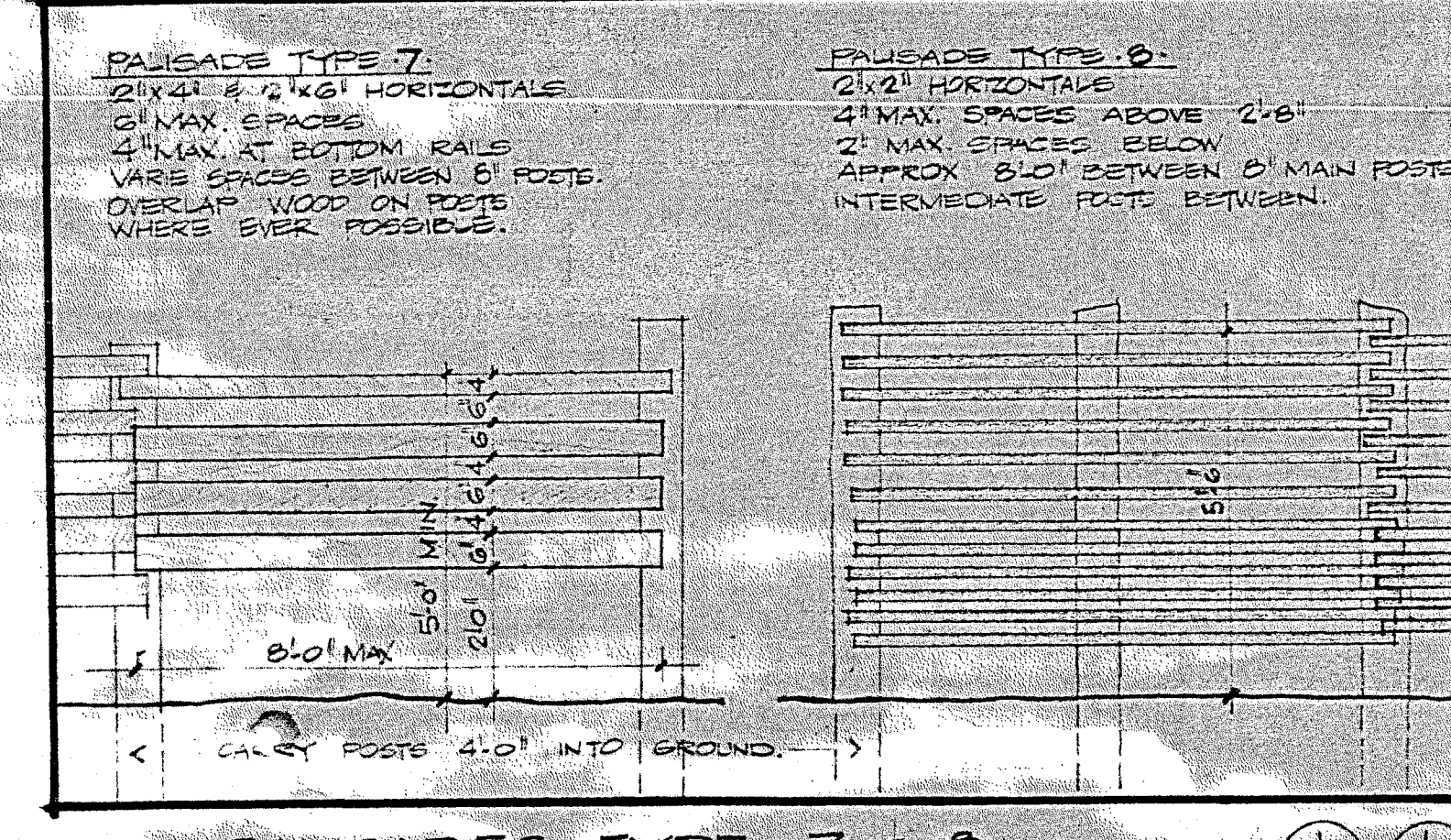
16 SECTION THRU MOAT 11 SCALE 3/8" = 1'-0" (2) ABSZ



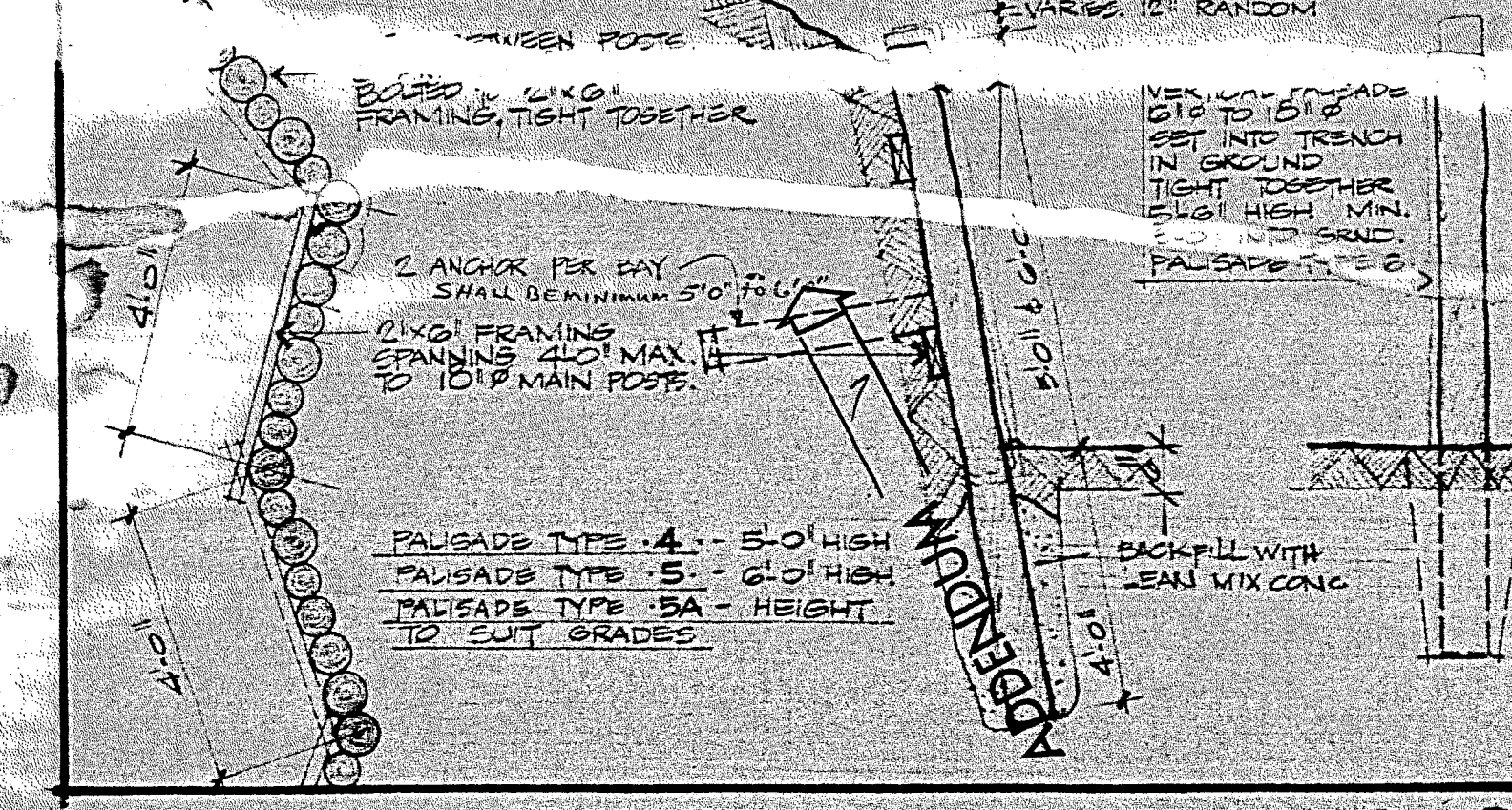
17 SECTION OF POND 1 & 2 & LUNGFISH MOAT SCALE 1/2" = 1'-0" (1) A12 (1) A13



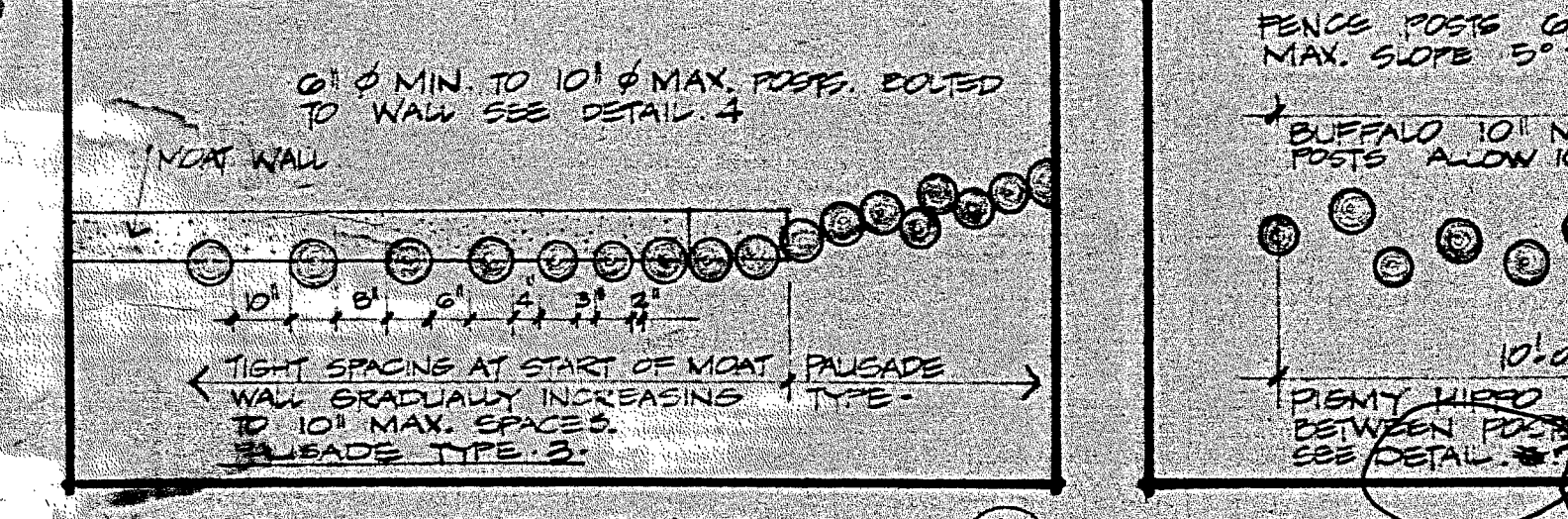
18 DETAILS OF PALISADE TYPE 9 SCALE 3/8" = 1'-0" (1) A14



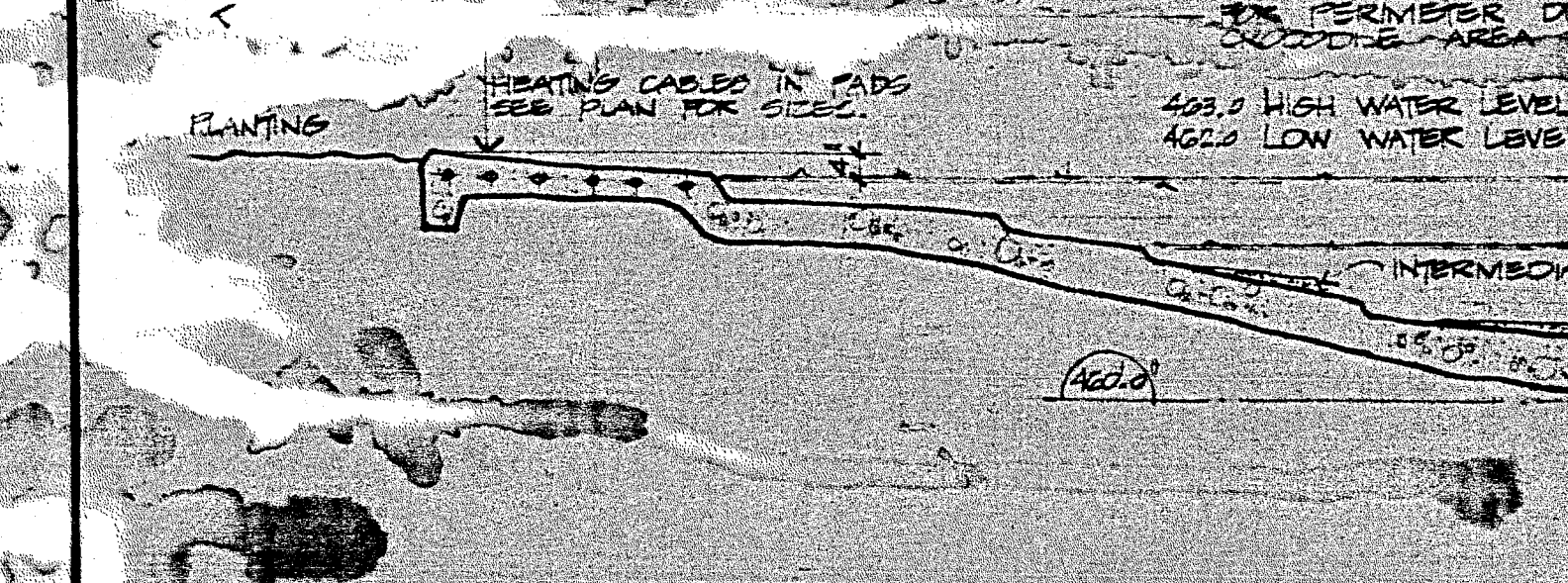
19 PALISADES TYPE 7 & 8 SCALE 3/8" = 1'-0" (1) A14 (1) A15



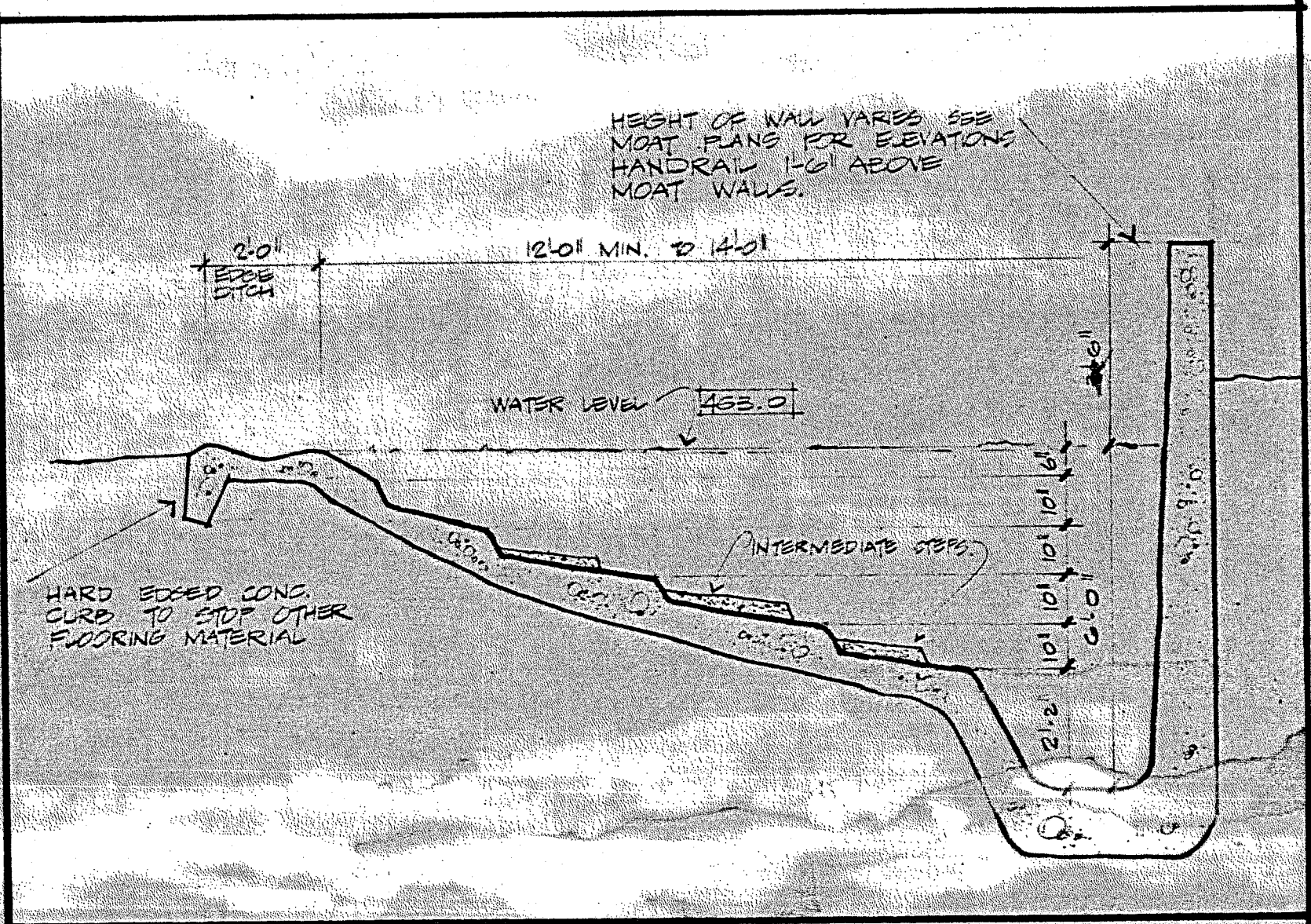
20 PALISADES TYPE 4, 5 & 6 SCALE 3/8" = 1'-0" (1) A14 (1) A15



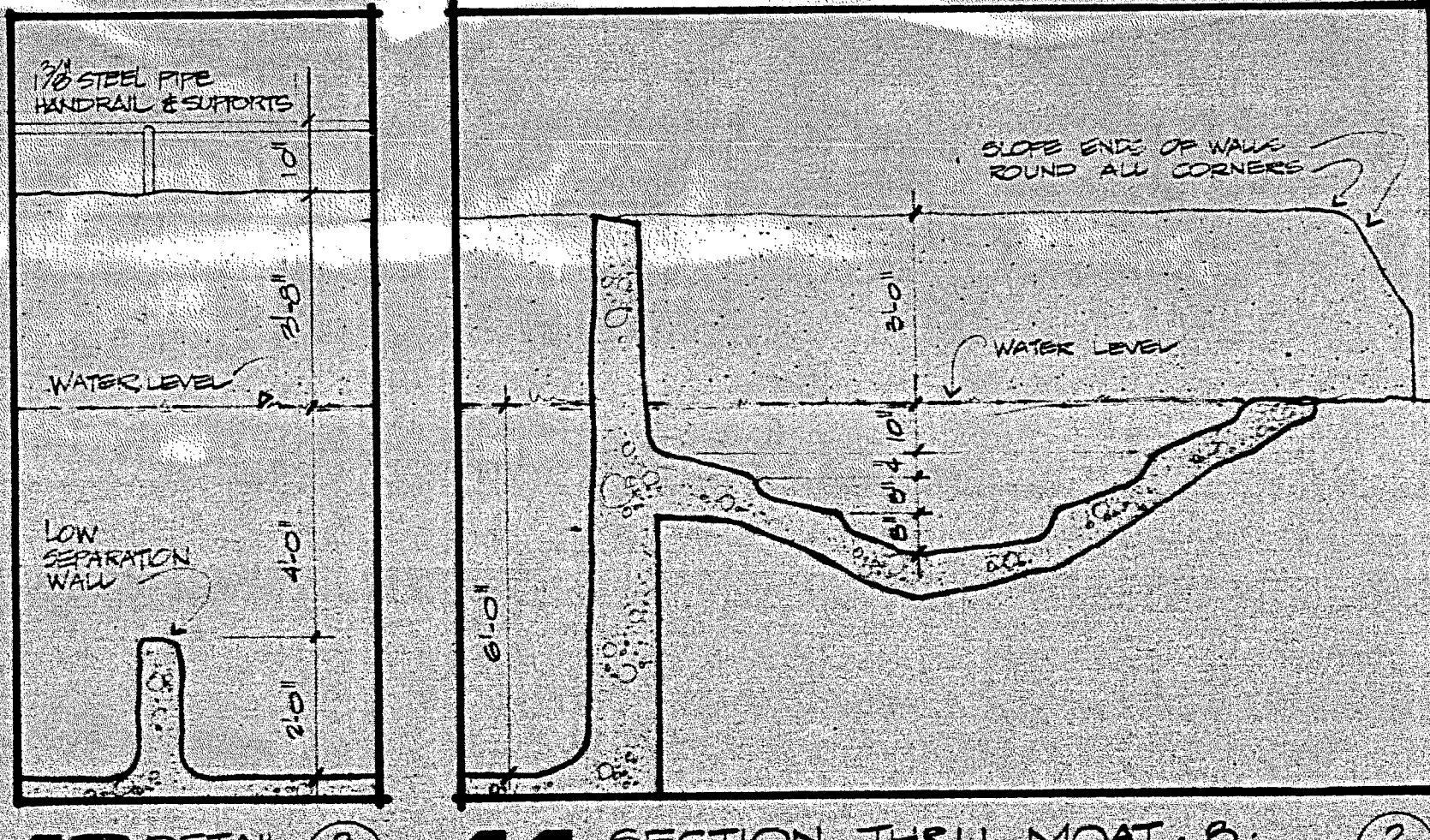
21 PALISADE TYPE 3 SCALE 3/8" = 1'-0" (1) A14



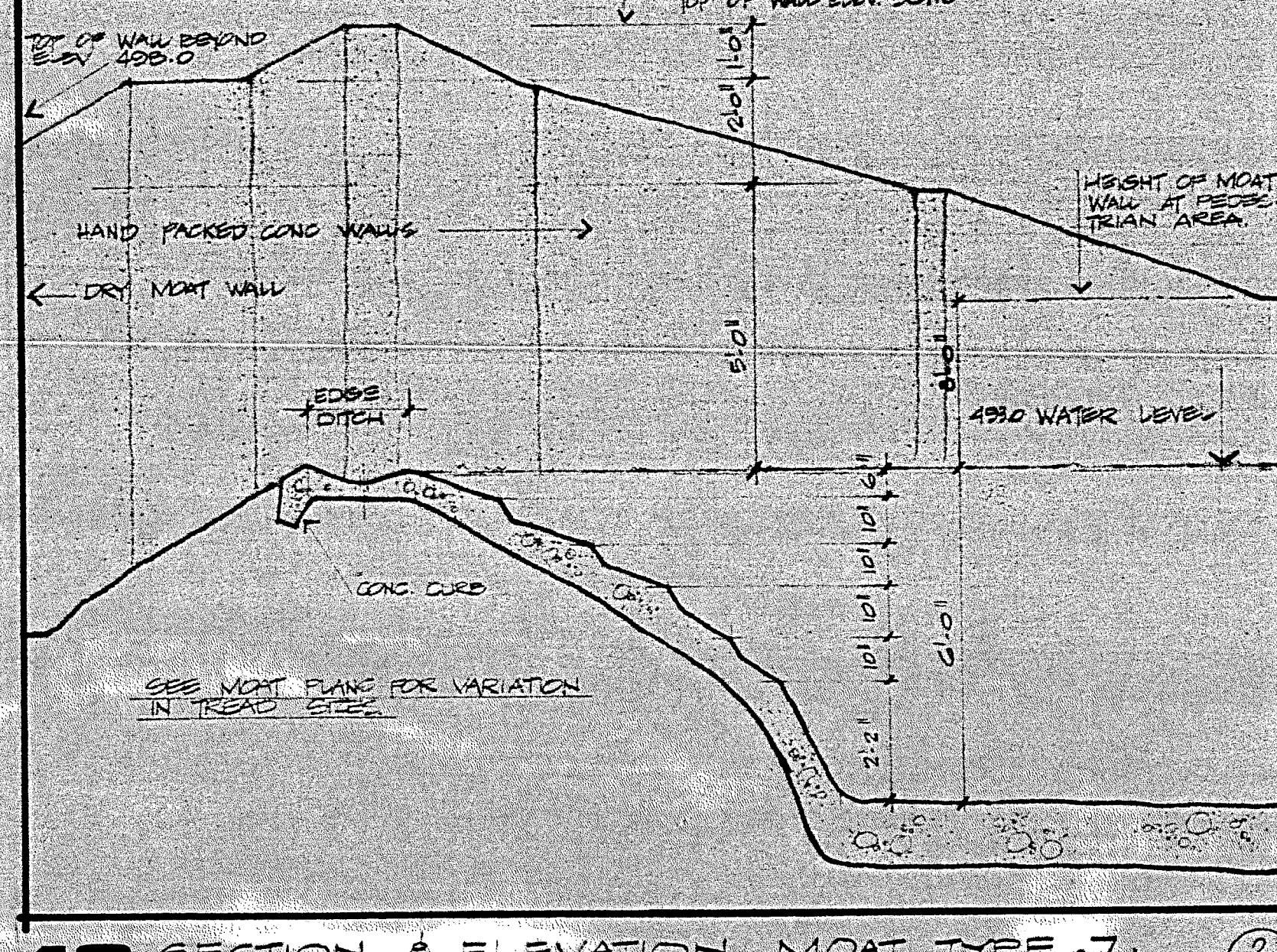
22 PALISADE TYPE 1 SCALE 3/8" = 1'-0" (1) A14



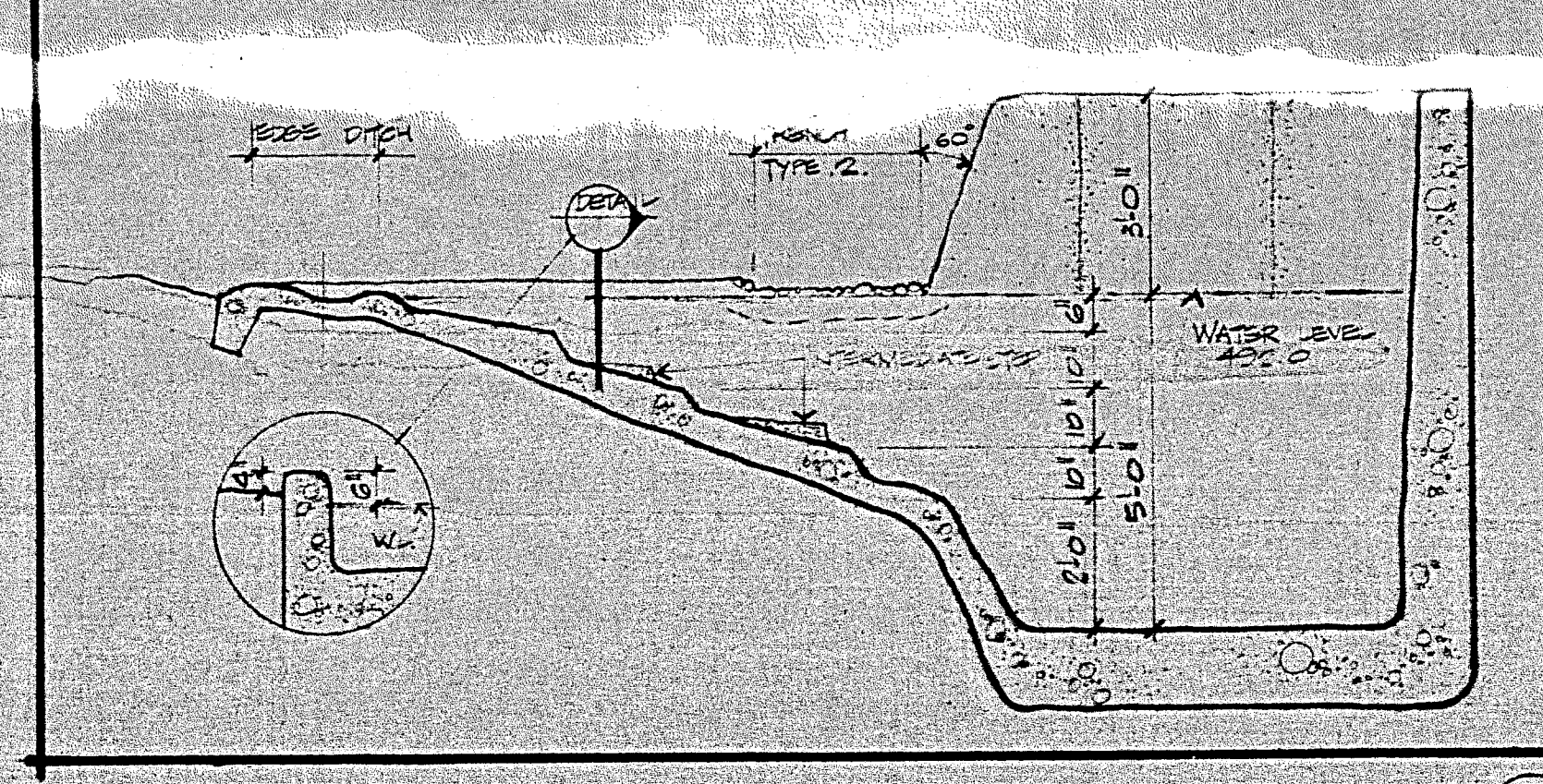
15 SECTION THRU MOAT 10 SCALE 3/8" = 1'-0" (2) ABSZ



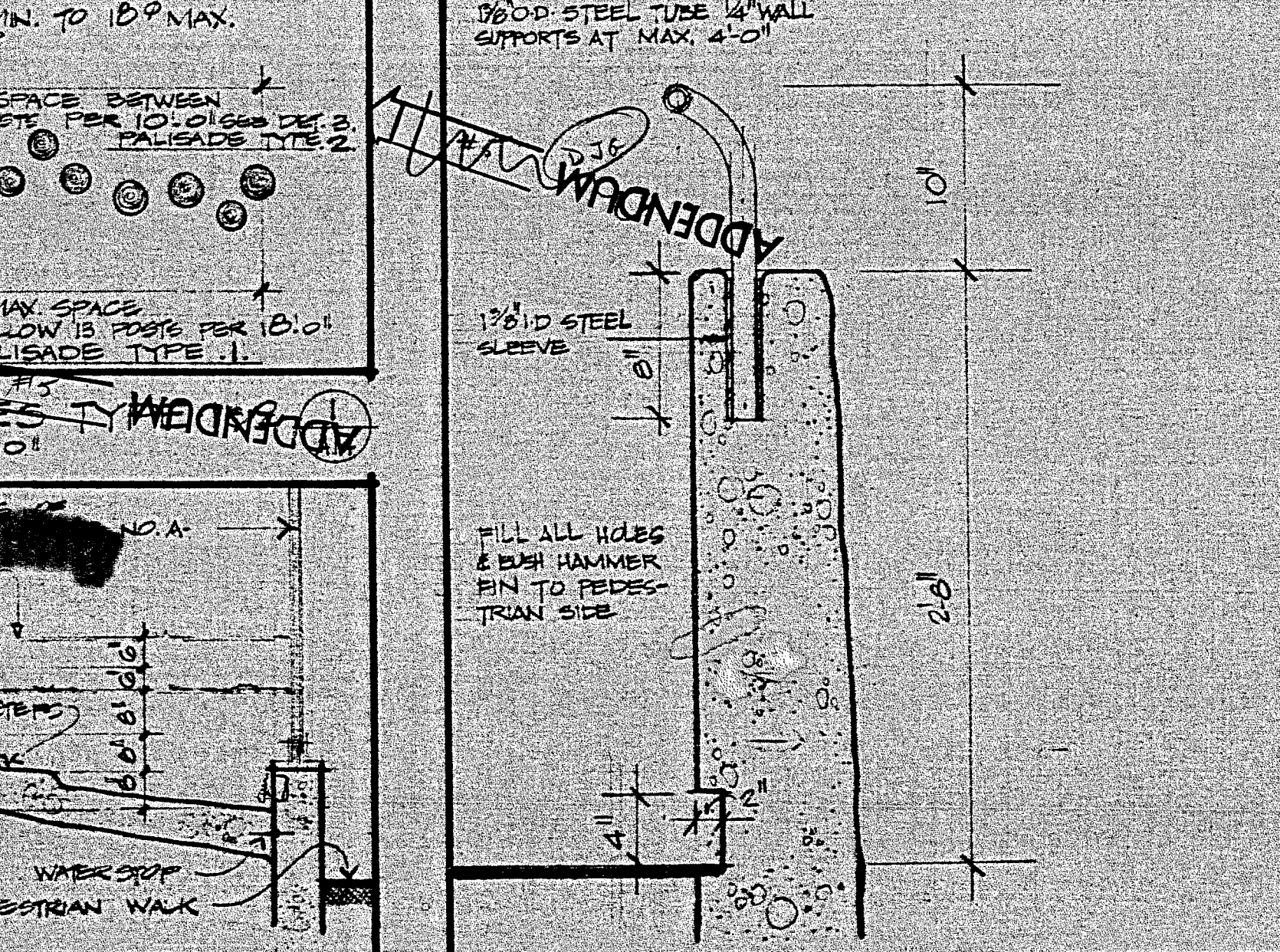
13 DETAIL SCALE 3/8" = 1'-0" (2) ABSZ



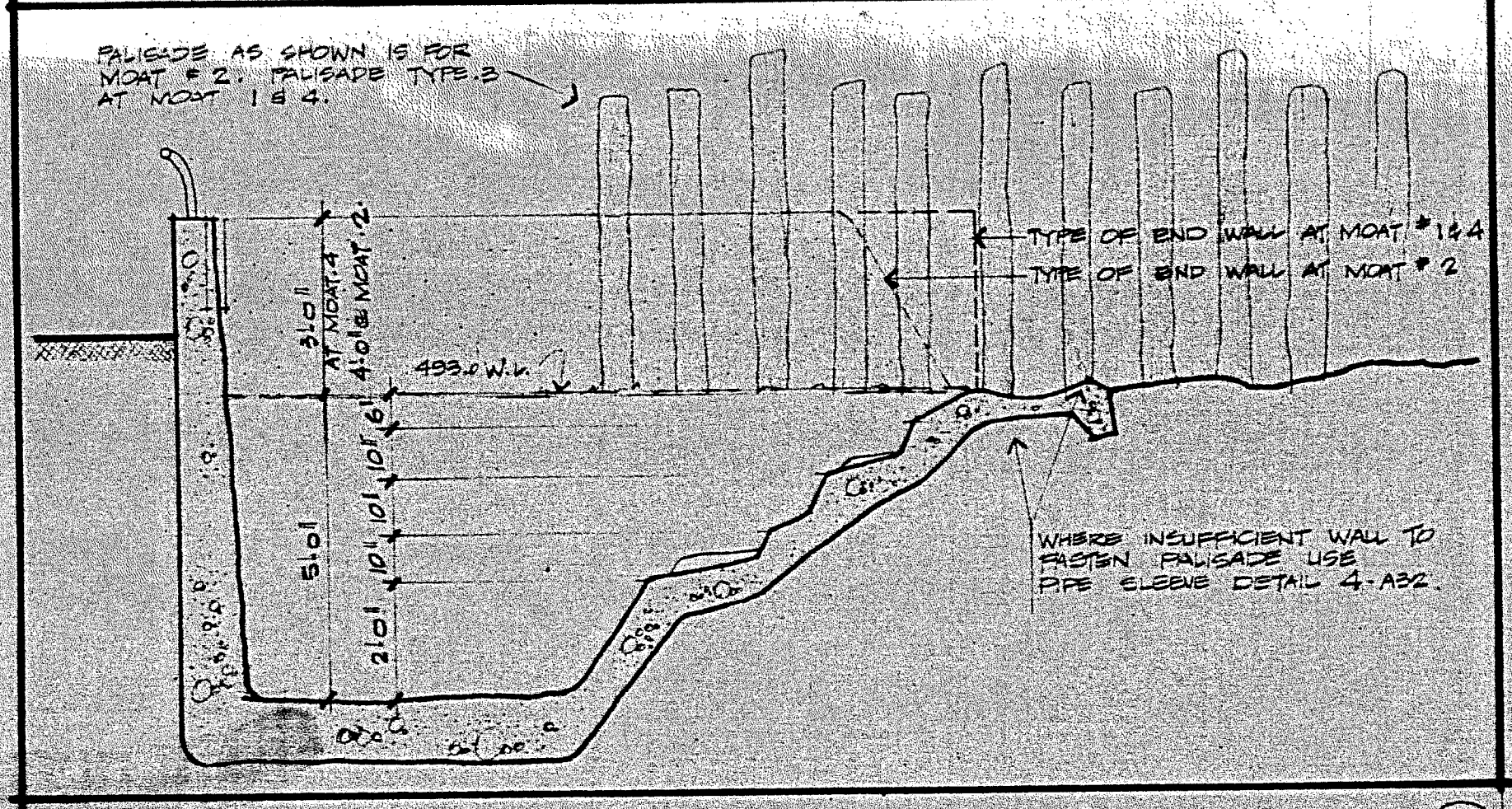
14 SECTION THRU MOAT 8 SCALE 3/8" = 1'-0" (2) ABSZ



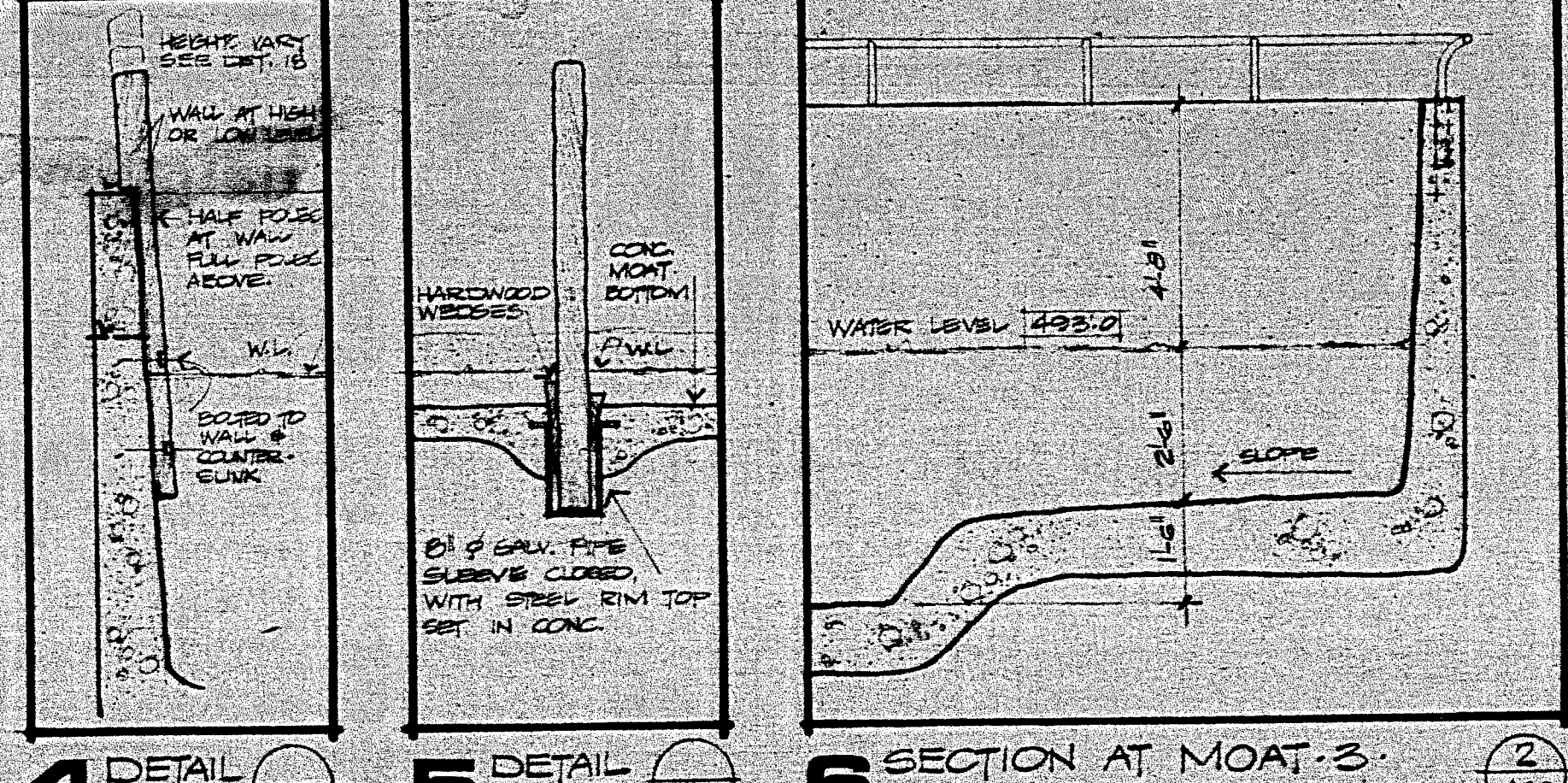
12 SECTION & ELEVATION MOAT TYPE 7 SCALE 3/8" = 1'-0" (2) ABSZ



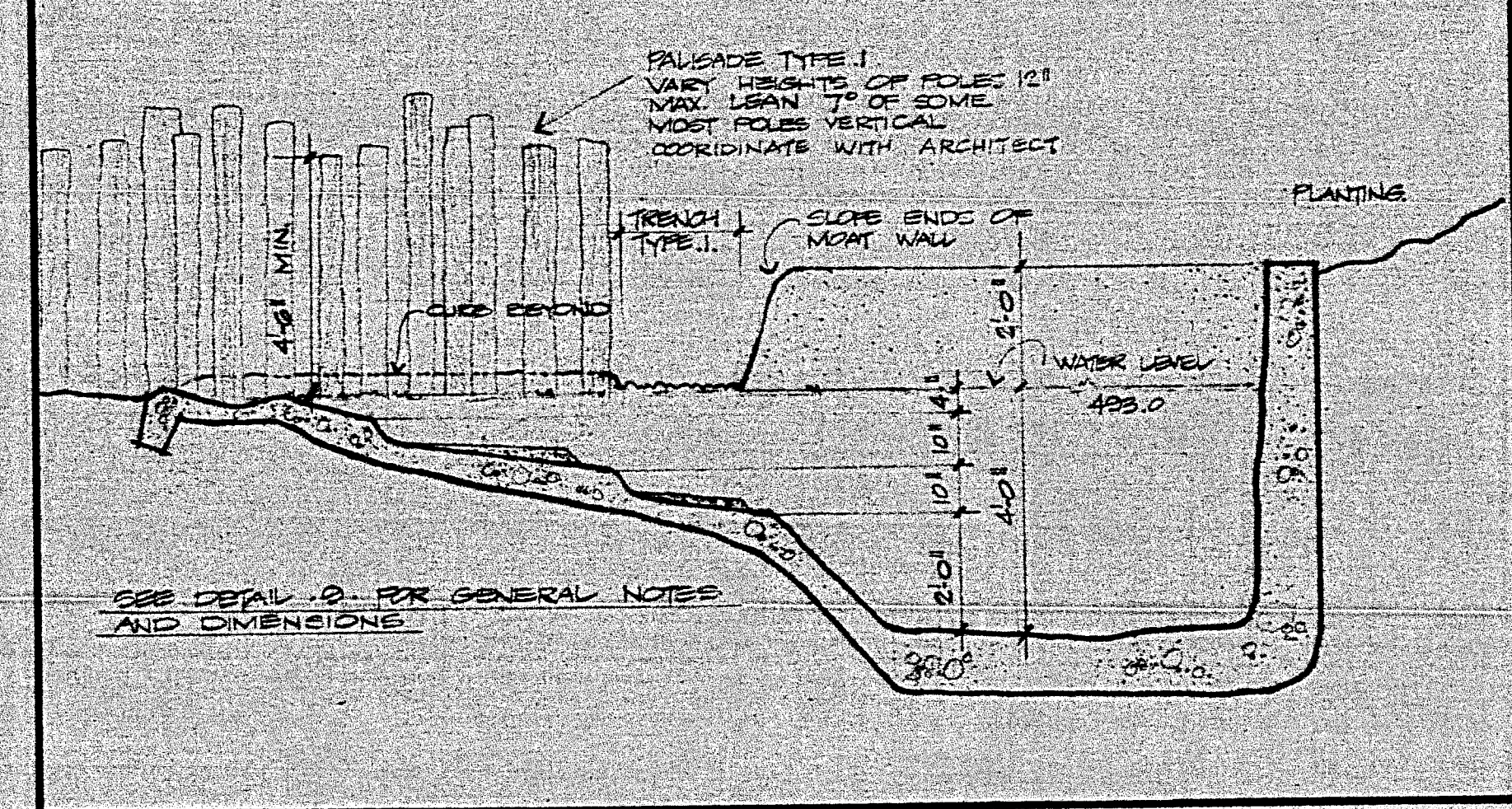
11 SECTION THRU MOAT TYPE 5 SCALE 3/8" = 1'-0" (2) ABSZ



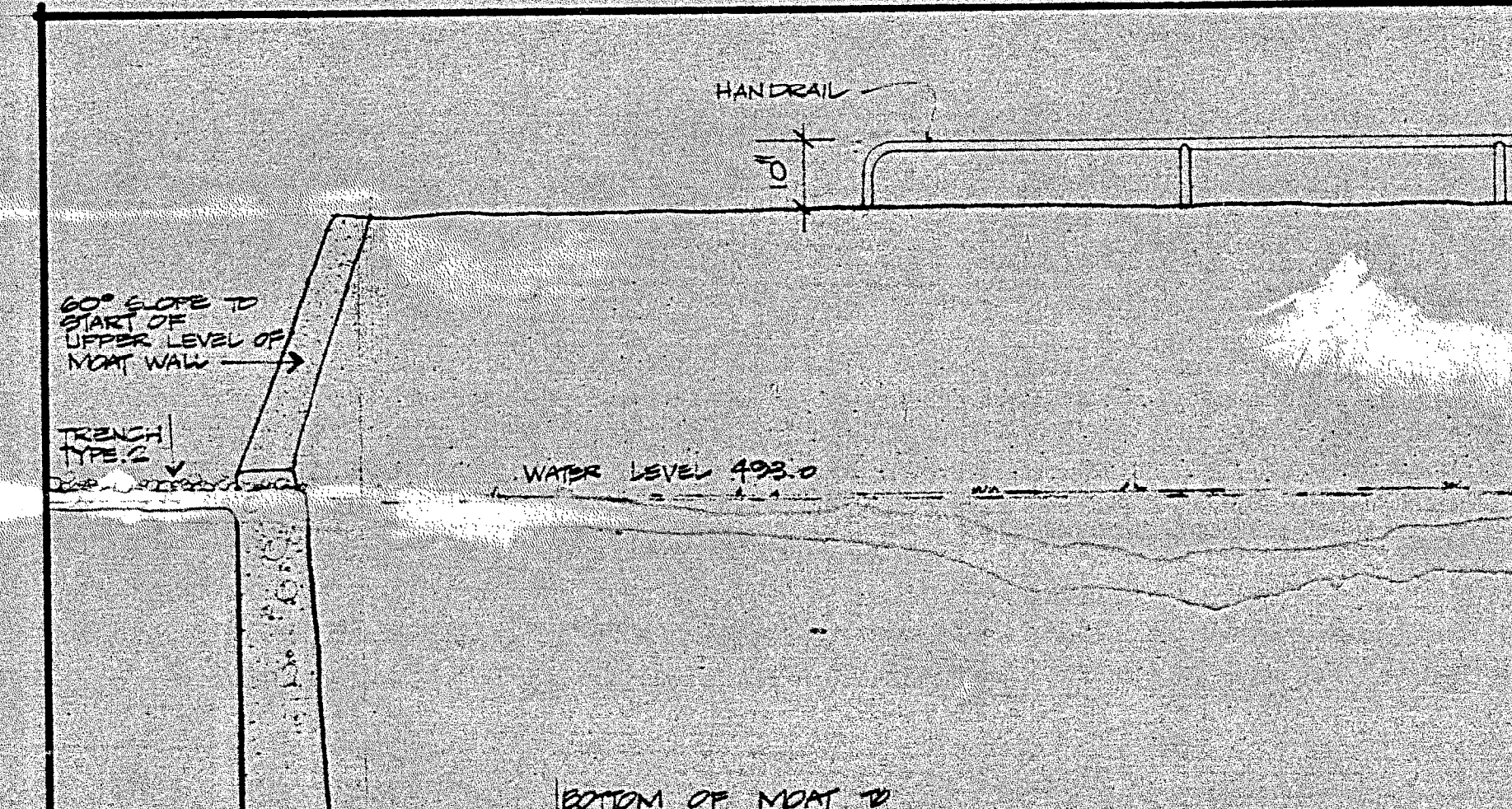
3 SECTION THRU MOAT 2, MOAT 4 SIMILAR SCALE 3/8" = 1'-0" (2) ABSZ



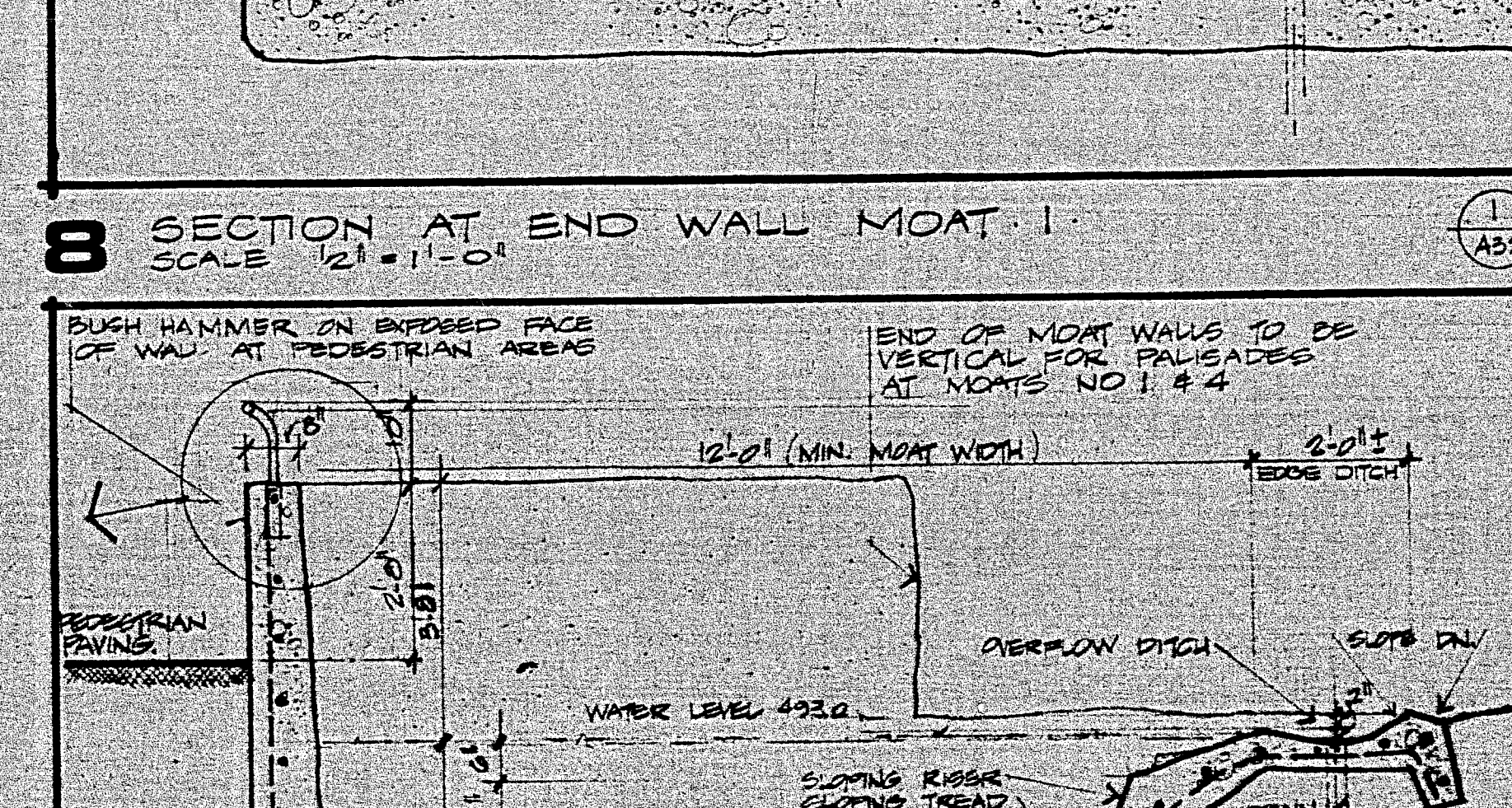
4 DETAIL SCALE 3/8" = 1'-0" (2) ABSZ



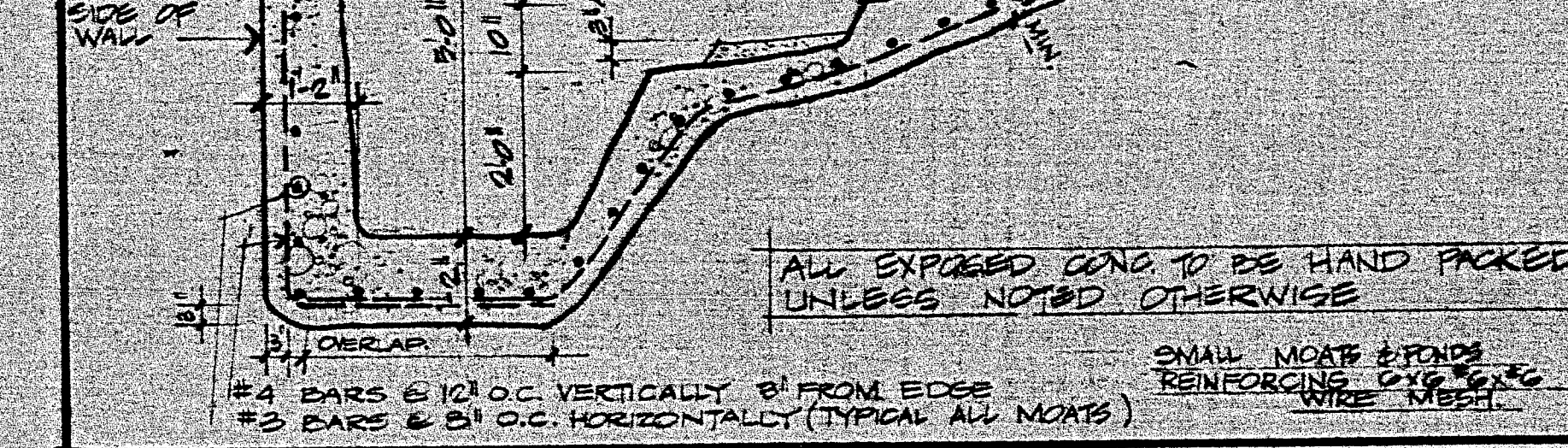
5 DETAIL SCALE 3/8" = 1'-0" (2) ABSZ



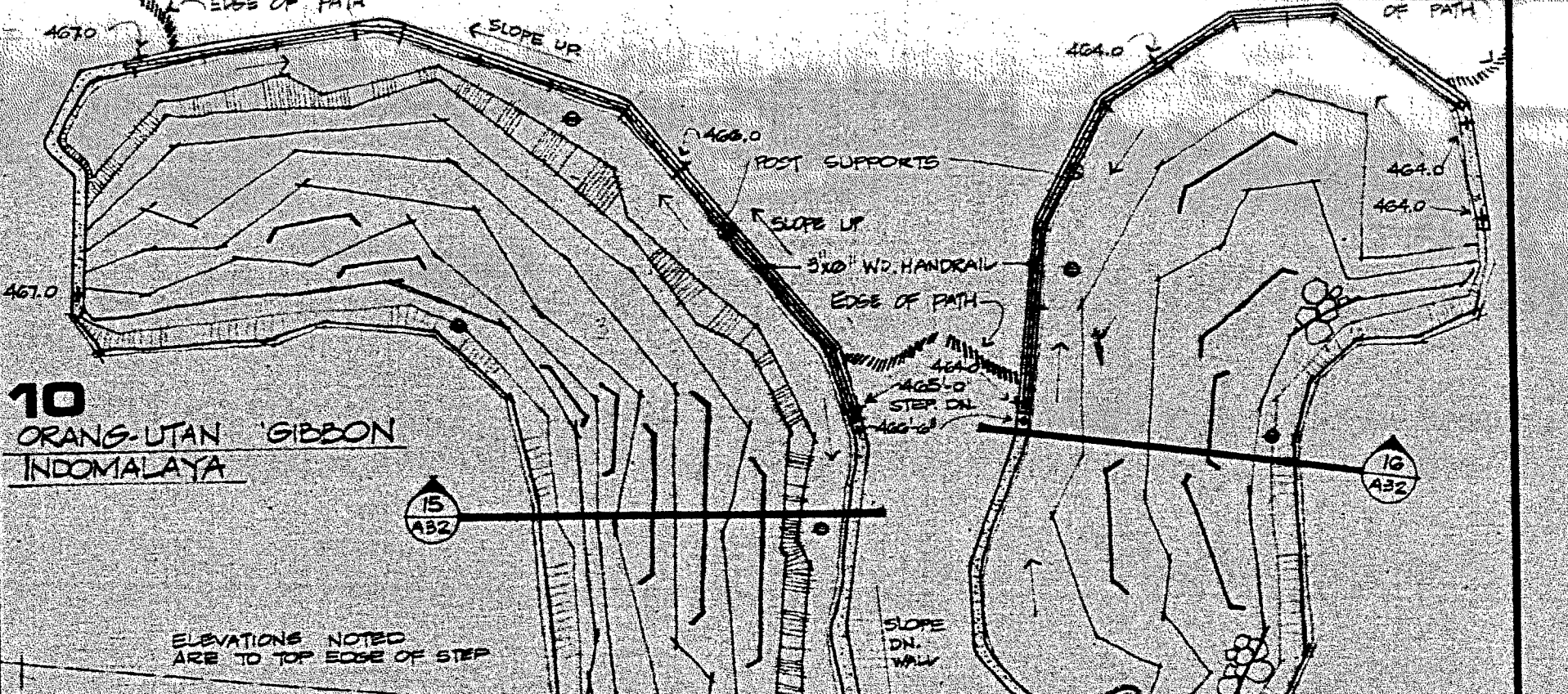
6 SECTION AT MOAT 3 SCALE 3/8" = 1'-0" (2) ABSZ



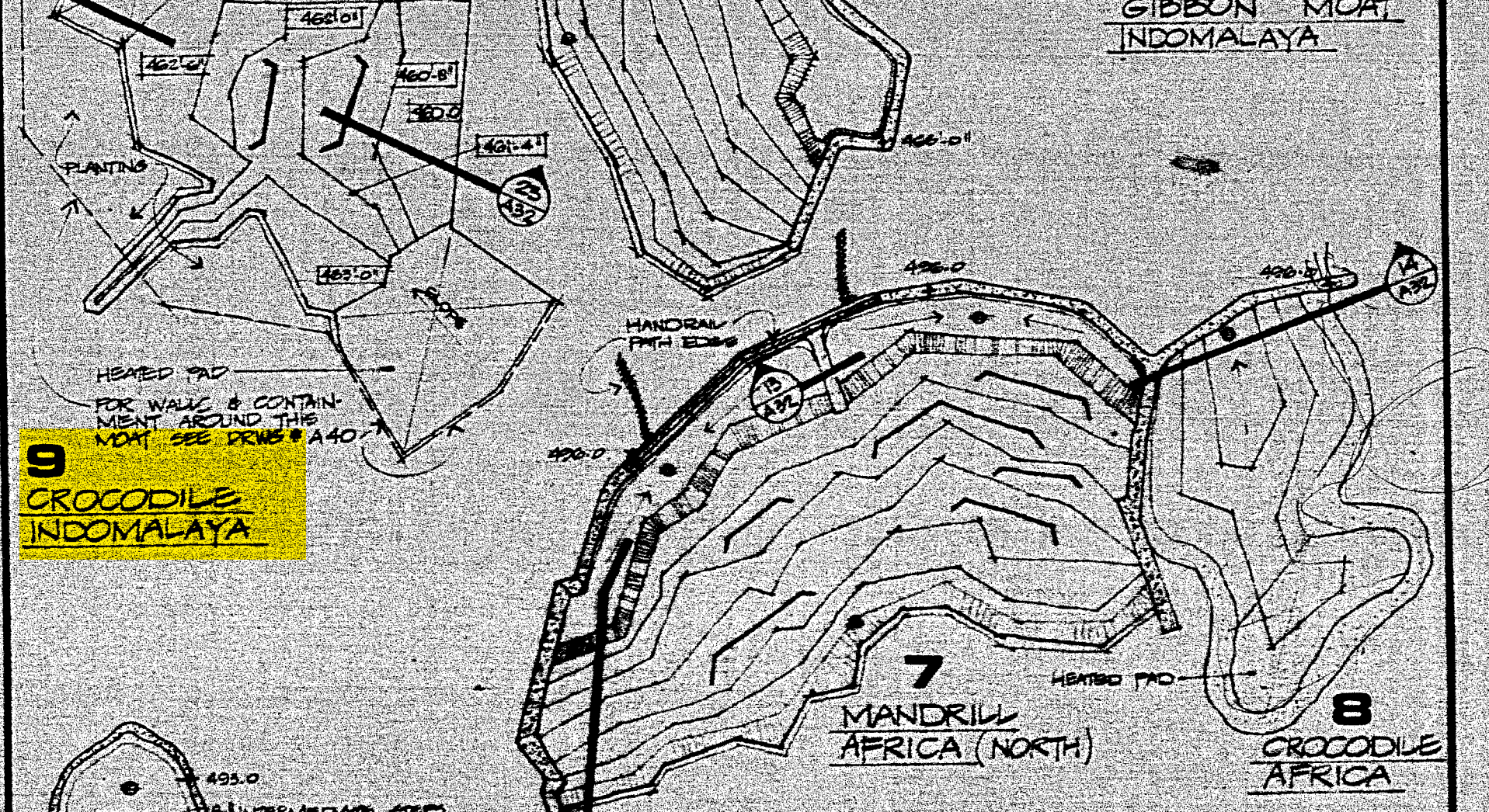
7 SECTION THRU MOAT 3 SCALE 3/8" = 1'-0" (2) ABSZ



8 SECTION AT END WALL MOAT 1 SCALE 1/2" = 1'-0" (1) ABSZ



10 OKUSUTAN GIBBON INDOMALAYA SCALE 1/4" = 1'-0" (1) A12



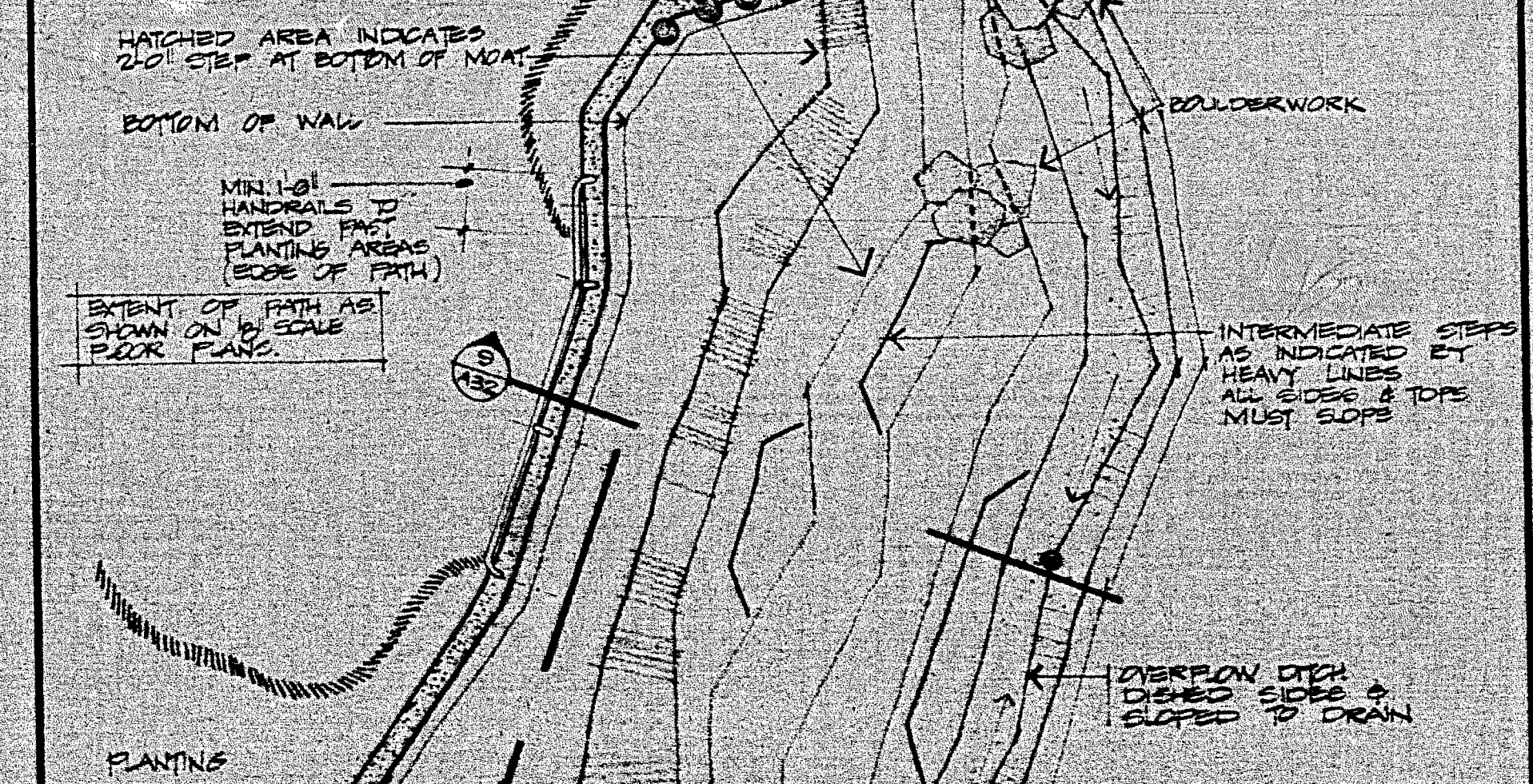
11 GIBBON MOAT INDOMALAYA SCALE 1/4" = 1'-0" (1) A12



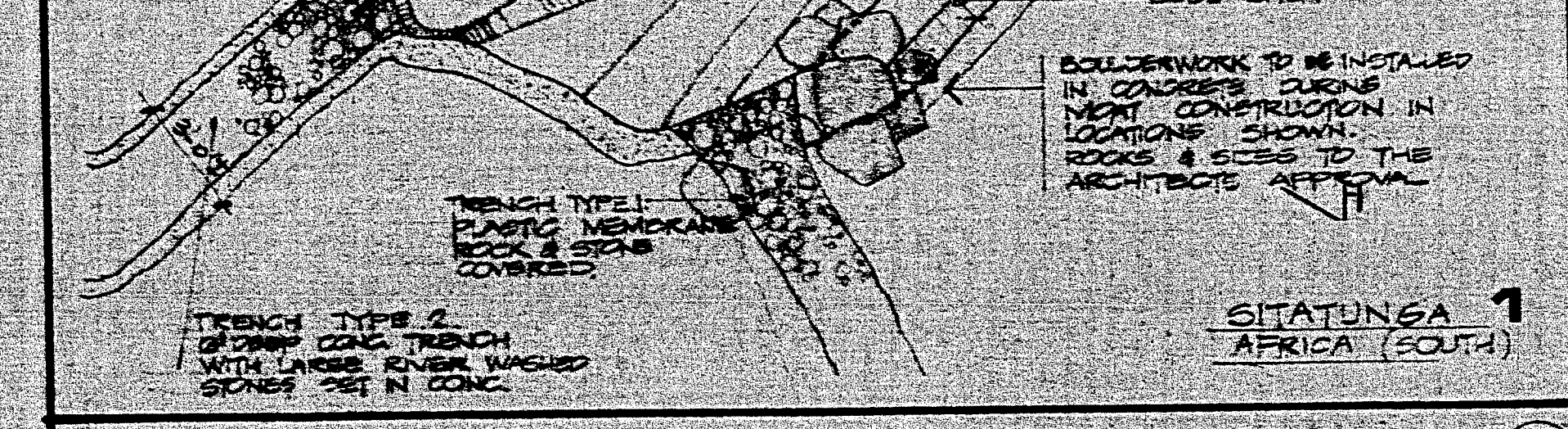
9 CROCODILE INDOMALAYA SCALE 1/4" = 1'-0" (1) A12



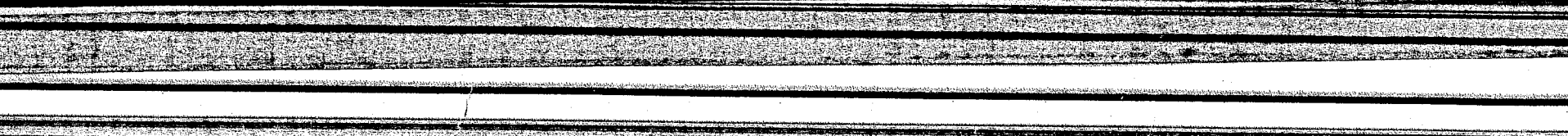
7 MANDRILL AFRICA (NORTH) SCALE 1/4" = 1'-0" (1) A12



8 CROCODILE AFRICA SCALE 1/4" = 1'-0" (1) A12



6 LUNGFISH SCALE 1/4" = 1'-0" (1) A12



5 DRILL & DIANA MONKEY AFRICA (SOUTH) SCALE 1/4" = 1'-0" (1) A12

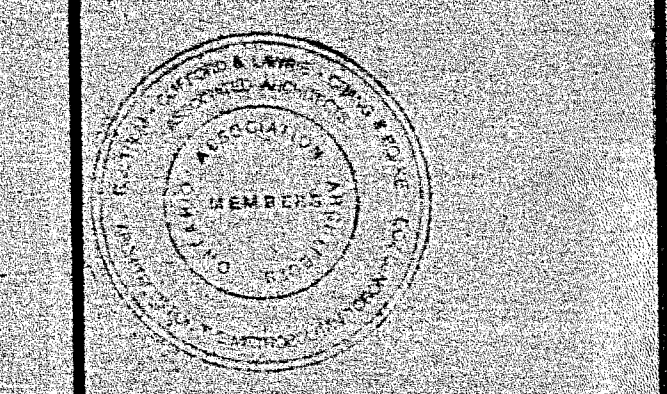
4 DUSH DUCK AFRICA (S) SCALE 1/4" = 1'-0" (1) A12

3 DEMY HIPPO AFRICA (SOUTH) SCALE 1/4" = 1'-0" (1) A12

2 HIPPO AFRICA & INDOMALAYA SCALE 1/4" = 1'-0" (1) A12

1 MOAT TYPE 1 SHOWING GENERAL NOTES SCALE 1/4" = 1'-0" (1) A12

Municipality of Metropolitan Toronto Parks Department
 T.W. Thompson, Commissioner
 R.J. Thom, Clifford & Lawrie Crang & Boake
 Architects for the Metropolitan Toronto Zoo
 M.S. Yolles Associates Ltd. Structural Engineers
 H.H. Angus & Assoc. Ltd. Mech. & Elect. Engineers
 Johnson, Sustrunk, Weinstein and Associates Ltd. Landscape Architects



METROPOLITAN TORONTO ZOO

AFRICA & INDOMALAYA PAVILIONS

proj office
 zoo director
 parks dept. R.W. Bramwell

MOAT & PALISADE DETAILS

date 7 APRIL 1972
 scale AS NOTED
 drawn W.P.
 checked A.P.R.
 contract no. Z-11-72
 contract package no. 2
 drawing no.

A32